

EMSLEY  MAVOR
ESTATE AGENTS

...your home is where our heart is



The Terrace

Oswaldkirk, York, YO62 5XZ

Offers Over £500,000



The Terrace

Oswaldkirk, York, YO62 5XZ

STYLE - Impressive Stone Built Home with Stunning Panoramic Views.

HIGHLIGHTS - Beautifully Styled Throughout, Versatile Ground Floor living, Generous Dining Room/Guest Bedroom with Shower Room. Three Bedrooms, with Views! Sleek Bathroom. South Facing Garden, Summer House and Timber Stores.

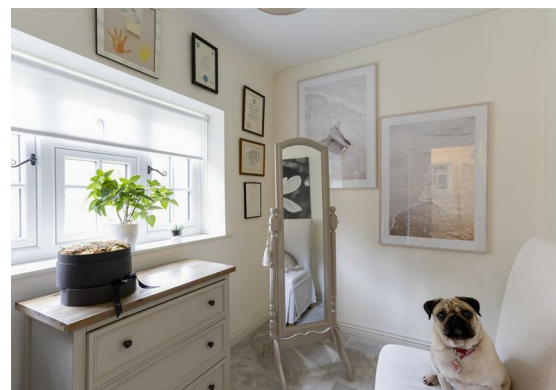
THREE WORDS - Serene. Stunning. Setting!

CHARMING HOME WITH SCENIC VIEWS

Welcome to The Terrace, an exquisite stone-built residence nestled in the idyllic village of Oswaldkirk, just a short four-mile journey from the enchanting market town of Helmsley. This stunning home, with its south-facing orientation, offers breathtaking panoramic views of the rolling countryside, providing a peaceful retreat for those seeking tranquillity and elegance.

Inside, the stylish interiors are adorned with subtle Farrow and Ball tones, complemented by smart floor coverings and carpets, creating a warm and inviting atmosphere. With attention to detail and all the finishing touches, any lucky buyer simply needs to move their furniture in and call it home!





STEP INSIDE

Upon entering, you are greeted by a warm and inviting hallway that sets the tone for the rest of this delightful home. The ground floor is thoughtfully designed to offer versatility and flow, featuring three reception rooms. The sitting room, bathed in natural light from dual aspect windows, provides a cosy retreat with its multi-fuel burning stove and views over the expansive garden. Adjacent is a snug, perfect for quiet moments of reflection, also enjoying garden vistas.

The heart of the home is the fully fitted kitchen, equipped with modern conveniences for the avid cook. French doors seamlessly connect the kitchen to the garden, inviting you to dine alfresco on the decked terrace. The generous dining room, which can double as a guest room, is complemented by a convenient shower room and utility space, ideal for extended family living or hosting guests.

UPSTAIRS

Upstairs, two double bedrooms offer stunning views of the Howardian Hills, while a third single bedroom currently serves as a dressing room. The newly fitted bathroom is sleek and contemporary, providing a touch of luxury.

OUTSIDE

The gardens marry this home superbly with the surrounding countryside as the lush lawn ends the rolling countryside begins. South facing the garden is a generous size and a super space for children to play and a keen gardeners haven. The decked terrace is perfect for alfresco dining and enjoying summer BBQs or relaxing watching the sun set.

A summer house/home gym, equipped with power and lighting, adds versatility, while a timber shed and potting shed provide ample storage. The front of the property offers off-street parking for multiple vehicles, surrounded by small trees and perennials.

This beautiful home is a rare find—don't miss the opportunity to make it yours.



Floor Plan



Viewing

Please contact our Emsley Mavor Estate Agents Office on 01347823579 if you wish to arrange a viewing appointment for this property or require further information.

Area Map



Energy Efficiency Graph



These particulars, whilst believed to be accurate are set out as a general outline only for guidance and do not constitute any part of an offer or contract. Intending purchasers should not rely on them as statements of representation of fact, but must satisfy themselves by inspection or otherwise as to their accuracy. No person in this firms employment has the authority to make or give any representation or warranty in respect of the property.

1 Tollbooth Building Market Place, Easingwold, North Yorkshire, YO61 3AB
Tel: 01347823579 Email: info@emsleymavor.co.uk <http://emsleymavor.co.uk>